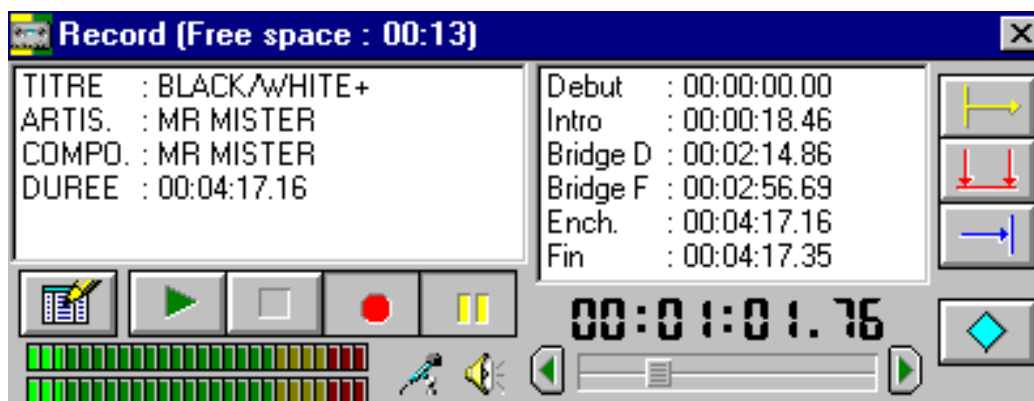


## *Record and Monitor*



*your Sounds !*

## OVERVIEW

---

Numisys proposes a recorder and audition module, compatible with all NUMISYS applications, which allows recording and listening to all audio titles included in the central library.

- HD audio elements are located either on a server or in a CD-ROM Jukebox
- Audio CDs are located in the jukebox (PIONEER or SONY) connected to the automation system.

This module is particularly interesting for Scheduling, Administration and Archiving workstations.

## FUNCTIONS OF THE SYSTEM

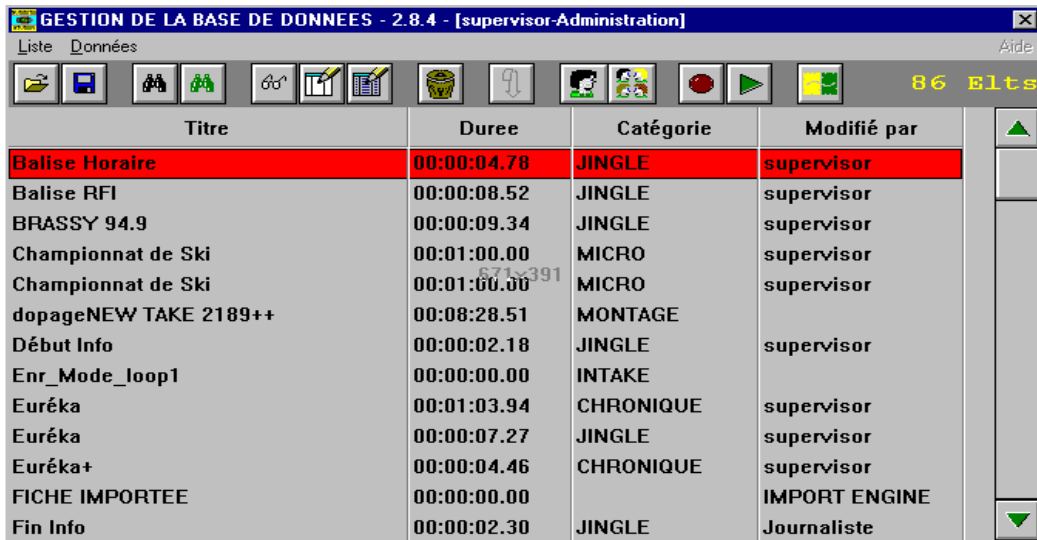
---

The functions provided are:

- Direct Call from the DataBase Manager
- AUTO-START / PLAY / PAUSE
- Quick Record
- Editing while recording
- Adjustment of audio levels
- Cueing of Audio
- Setup of audio TCs
- Configurable display (full application, reduced view, toolbar)
- Direct replay from Audio CD Jukeboxes
- Automatic management of CD-ROM jukeboxes

## Monitoring of Audio Titles

The recorder module is fully interfaced with the audio library and audio selection is possible by a simple click in the database display.



Titre	Duree	Catégorie	Modifié par
<b>Balise Horaire</b>	00:00:04.78	<b>JINGLE</b>	<b>supervisor</b>
Balise RFI	00:00:08.52	JINGLE	supervisor
BRASSY 94.9	00:00:09.34	JINGLE	supervisor
Championnat de Ski	00:01:00.00	MICRO	supervisor
Championnat de Ski	00:01:00.00	MICRO	supervisor
dopageNEW TAKE 2189++	00:08:28.51	MONTAGE	
Début Info	00:00:02.18	JINGLE	supervisor
Enr_Mode_loop1	00:00:00.00	INTAKE	
Euréka	00:01:03.94	CHRONIQUE	supervisor
Euréka	00:00:07.27	JINGLE	supervisor
Euréka+	00:00:04.46	CHRONIQUE	supervisor
FICHE IMPORTEE	00:00:00.00		IMPORT ENGINE
Fin Info	00:00:02.30	JINGLE	Journaliste

Replay of audio is triggered by:

- Audio selection in auto-start mode
- Play button from the database display
- Play/top/pause buttons of the recorder

Useful features are provided to monitor the audio title:

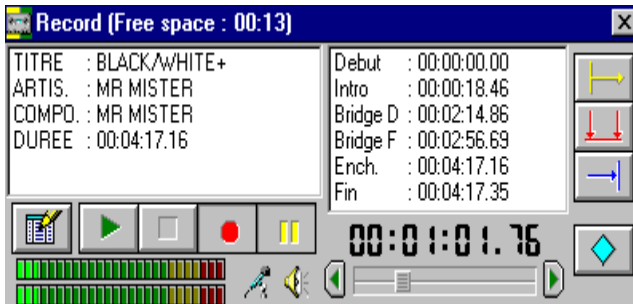
- Direct location to intro, bridge or end TCs
- Cueing of Audio with slider
- Fine tuning with arrows
- Adjustment of audio levels
- Setup of remarkable audio TCs (start, intro, bridge, link, end)

---

## Configurable Display

---

The display may be configured in 3 modes to perfectly match the operator need:



- Enlarged to get maximum information
- Audio peakmeter
- Title information
- Audio TCs

- Topbar



- Reduced view integrated in main application display

---

## Recording of Audio

---

Recording of audio is triggered by a single click in the database toolbar.

The recorder module allows to:

- Adjust audio input
- Put some mark during recording
- Update audio information (title, text, memo) during recording
- Begin audio editing on the same or a different workstation during recording

---

## POSSIBLE APPLICATIONS

---

---

### EDITING WORKSTATION

---

Editing workstation may be equipped with 2 audio cards in order to allow recording and editing at the same time.

The audio title edited and recorded may be the same or not.

---

### SCHEDULING WORKSTATION

---

The recorder module is of great help on the scheduling workstation in order to select the appropriate audio title. Using the autostart mode a single click of the selection triggers the audio replay.

---

### ARCHIVING & ADMINISTRATION WORKSTATION

---

The recorder module is helpful on the workstation in order to check the audio titles before archiving or deletion.

---

## TECHNICAL SPECIFICATIONS

---

### Audio Monitoring

PCX20, PCX9 PB, PCX9 PB/REC

### Audio Recording

PCX9 PB/REC

### Minimum configuration required

- PC Pentium 133Mhz 16 MB RAM
- 500 MB HD required for software & database
- WINDOWS 95